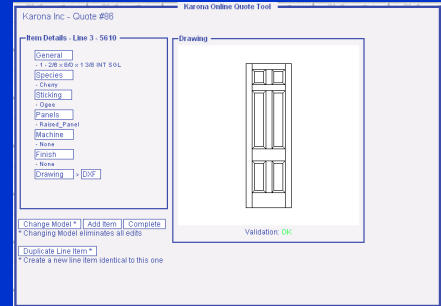
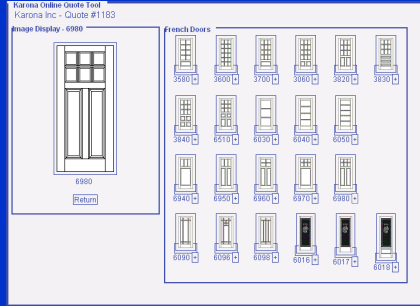


# Introducing the all new Karon Online Quote Tool



## KEY FEATURES

**Quote Details 1183**

\*Project Name:

Estimator:

Mark Up: (ex. 1.3 = 30%)

\* Required Fields

- Track your Quotes by Project Name, Estimator, and Quote Number

- Add your mark up to Quotes by percentage to show your customer a delivered price

- Set Defaults for every door on the Quote, saving time at door entry

**Product Selection - Line 1**

**Panel Doors**

+  +  +  +

**French Doors**

+  +  +  +

**Louver Doors**

+  +  +

- Select any of our products with a single mouse click

- Access all of Karon's models in this tool

- Verify dimensions visually with Karon's dynamic drawings

**Item Details - Line 1 - 6980**

**General**  
- 1 - 2/8 x 6/8 x 1 3/4 INT S&L

**Species**  
- Cherry

**Sticking**  
- Ogee

**Panels**  
- Raised\_Panel

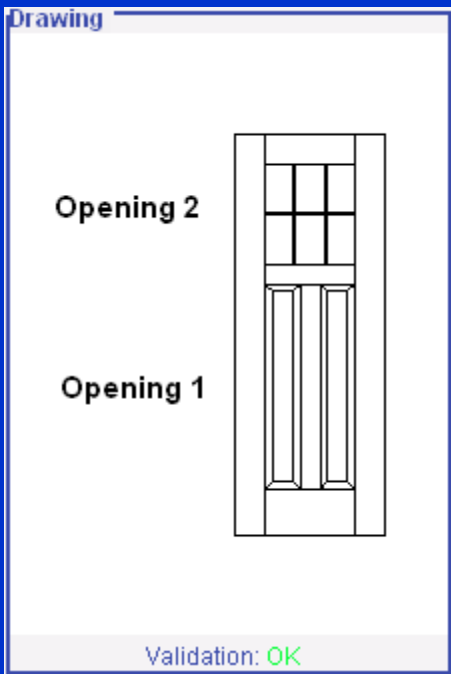
**Glass**  
- 0.25" Tempered

**Machine**  
- None

**Finish**  
- None

**Drawing** > DXF

- Change any attribute of the door by clicking on the buttons provided
- Change most options with a single mouse click
- Price even the most complex machining options with ease



- Change the dimensions of the stiles and rails simply by clicking on the image of the door
- Click the Top or Bottom of the door to change the outer rails
- Click inside the door to change the appearance of the opening

**Door Components**

Left	6
Right	6
Top	6
Bottom	9

**Center Rail 1**

F:	4	L*:	54
----	---	-----	----

\* Location is measured in inches from the bottom of the door.

Return Update

**Opening 1**

Mullions	
Qty	Face
1	4

**Opening Type**

Panel

Return Update

**Opening 2**

Horizontal Muntin Bar	
Qty	Face
1	0 1/2"

Vertical Muntin Bar	
Qty	Face
2	0 1/2"

**Opening Type**

Glass

Return Update